

BODY SECTION

This service manual has been prepared to provide SUBARU service personnel with the necessary information and data for the correct maintenance and repair of SUBARU vehicles.

This manual includes the procedures for maintenance, disassembling, reassembling, inspection and adjustment of components and diagnostics for guidance of experienced mechanics.

Please peruse and utilize this manual fully to ensure complete repair work for satisfying our customers by keeping their vehicle in optimum condition. When replacement of parts during repair work is needed, be sure to use SUBARU genuine parts.

All information, illustration and specifications contained in this manual are based on the latest product information available at the time of publication approval.

FUJI HEAVY INDUSTRIES LTD.

**HVAC SYSTEM
(HEATER, VENTILATOR AND A/C) AC**

AIRBAG SYSTEM AB

SEAT BELT SYSTEM SB

LIGHTING SYSTEM LI

WIPER AND WASHER SYSTEMS WW

ENTERTAINMENT ET

COMMUNICATION SYSTEM COM

GLASS/WINDOWS/MIRRORS GW

BODY STRUCTURE BS

INSTRUMENTATION/DRIVER INFO IDI

SEATS SE

SECURITY AND LOCKS SL

**SUNROOF/T-TOP/CONVERTIBLE TOP
(SUNROOF) SR**

EXTERIOR/INTERIOR TRIM EI

EXTERIOR BODY PANELS EB

CRUISE CONTROL SYSTEM CC

EXTERIOR/INTERIOR TRIM



	Page
1. General Description.....	2
2. Front Grille.....	10
3. Front Under Cover.....	11
4. Front Bumper	12
5. Rear Bumper	19
6. Mud Guard	21
7. Protector	22
8. Cowl Panel	25
9. Front Door Trim.....	26
10. Rear Door Trim.....	27
11. Glove Box.....	28
12. Roof Rail.....	29
13. Console Box	30
14. Instrument Panel Assembly.....	31
15. Upper Inner Trim	37
16. Lower Inner Trim	38
17. Rear Quarter Trim	39
18. Sun Visor.....	40
19. Roof Trim.....	41
20. Rear Gate Trim.....	42
21. Floor Mat.....	43
22. Luggage Floor Mat.....	44

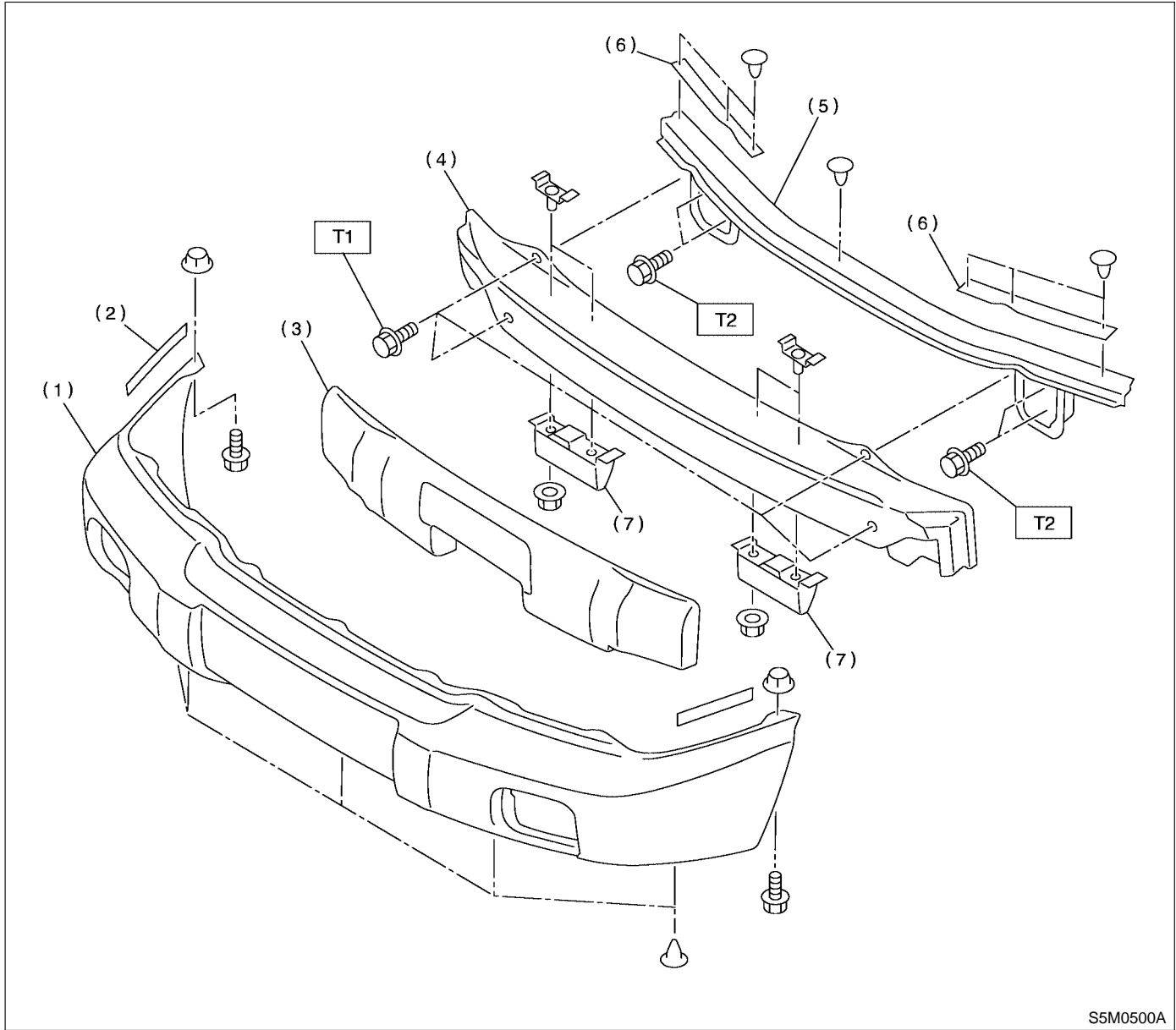
GENERAL DESCRIPTION

Exterior/Interior Trim

1. General Description S911001

A: COMPONENT S911001A05

1. FRONT BUMPER S911001A0501



- (1) Bumper face
- (2) Spacer
- (3) E/A foam
- (4) Back beam

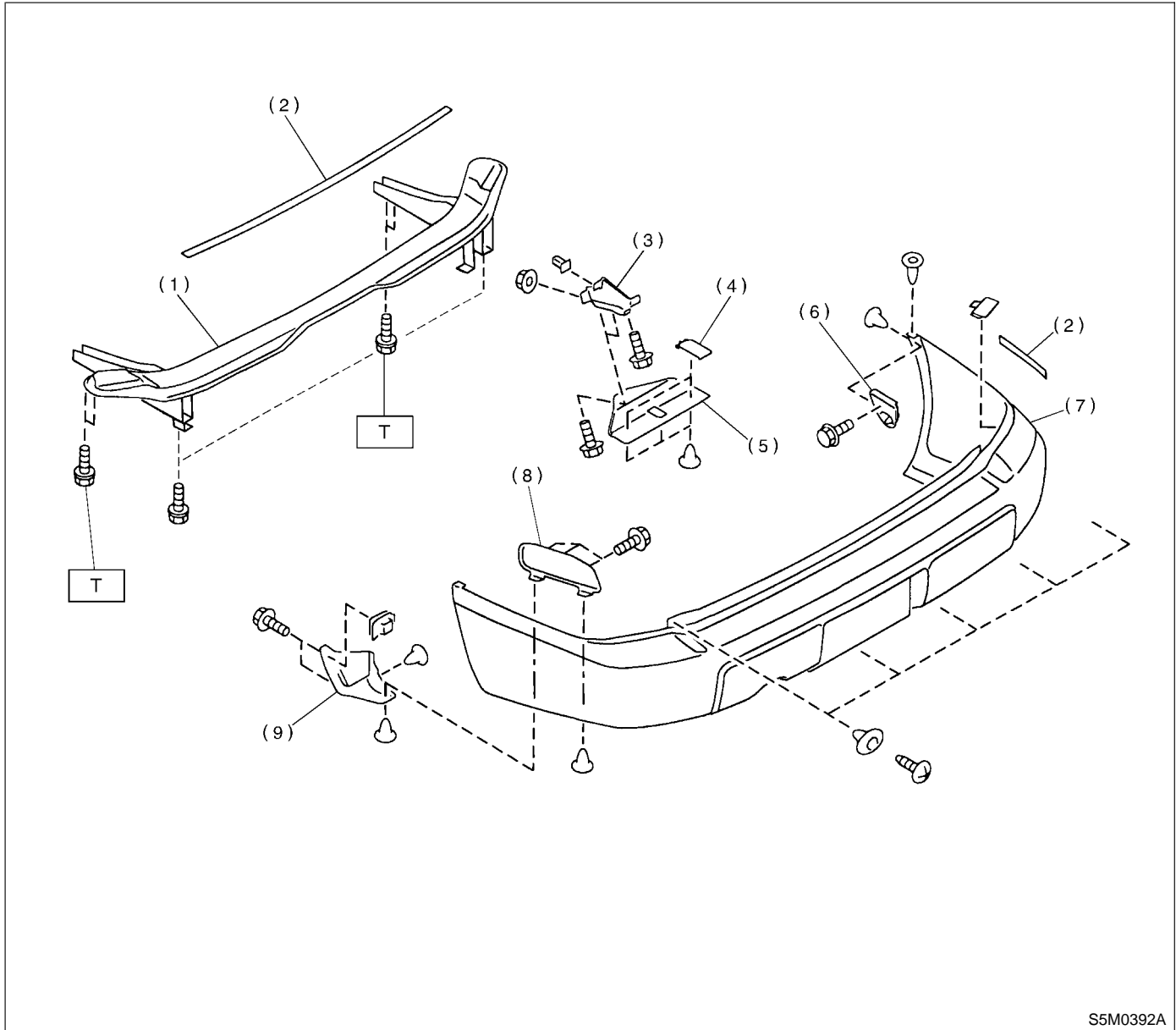
- (5) Beam upper
- (6) Plate
- (7) Bracket

Tightening torque: N·m (kgf·m, ft·lb)

T1: 33 (3.4, 25)

T2: 70 (7.1, 51)

2. REAR BUMPER S911001A0511



S5M0392A

- | | |
|--------------------------|------------------------|
| (1) Bumper beam | (5) Lower bracket |
| (2) Cushion | (6) Side upper bracket |
| (3) Lower center bracket | (7) Bumper face |
| (4) Rear bumper plate | (8) Bumper side plate |
| | (9) |

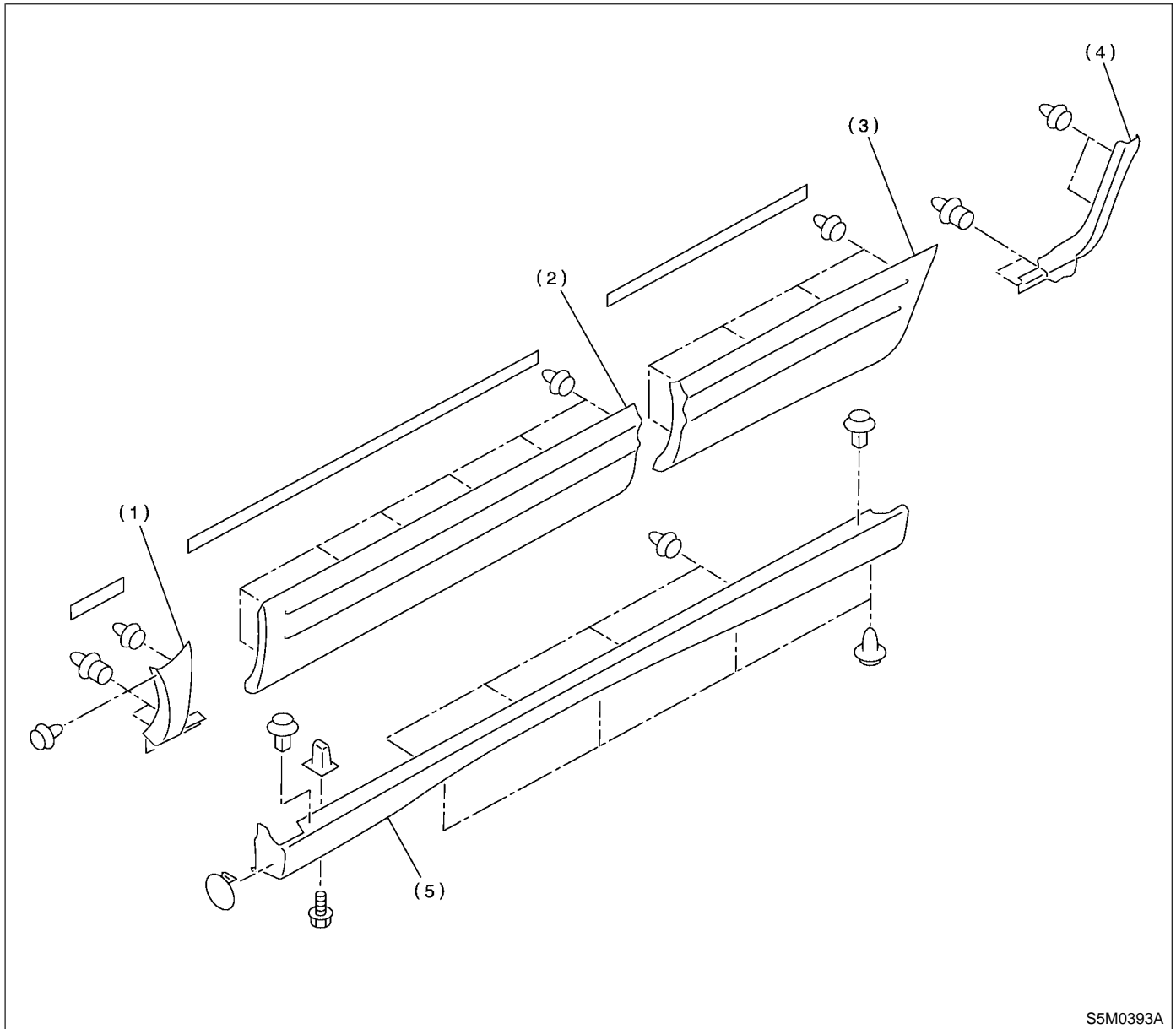
Tightening torque: N·m (kgf·m, ft·lb)

T: 93 (9.5, 69)

GENERAL DESCRIPTION

Exterior/Interior Trim

3. SIDE PROTECTOR S911001A0504



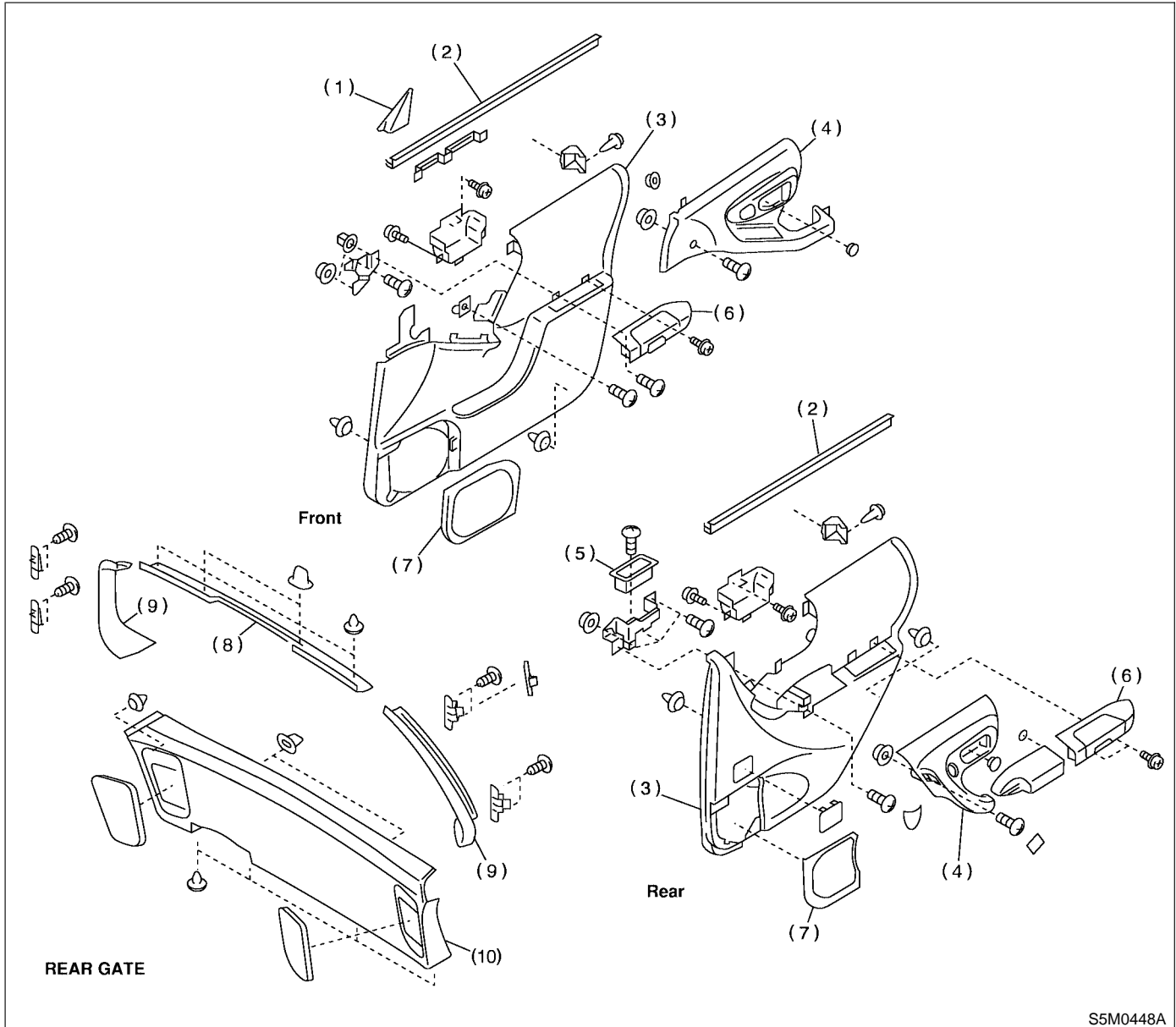
S5M0393A

(1) Side protector (Front fender)
(2) Side protector (Front door)

(3) Side protector (Rear door)
(4) Side protector (Rear quarter)

(5) Side protector (Side sill)

4. DOOR TRIM S911001A0505



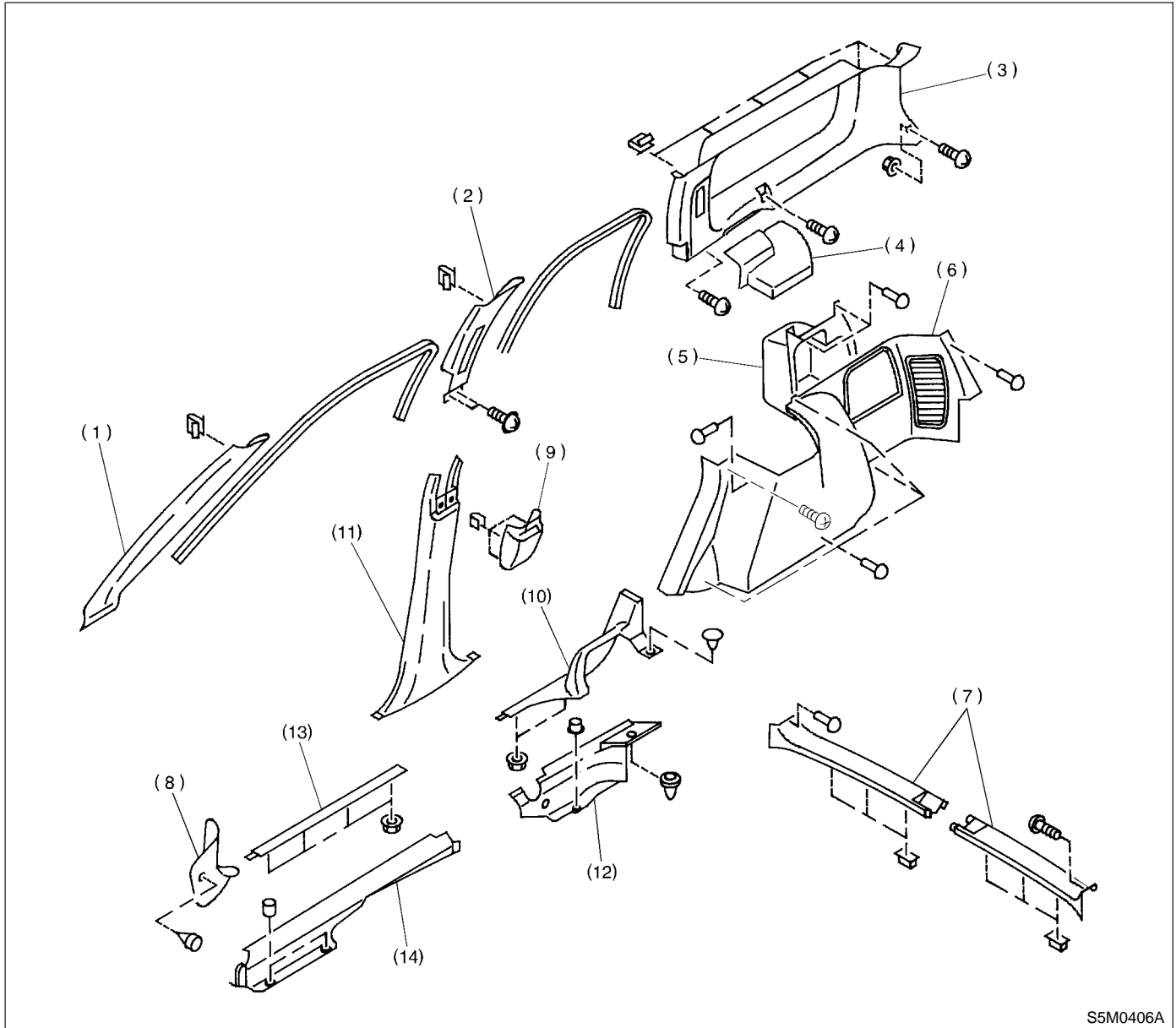
S5M0448A

- | | | |
|------------------|--------------------|-----------------|
| (1) Gusset cover | (5) Handle | (9) Side trim |
| (2) Weatherstrip | (6) Pocket | (10) Lower trim |
| (3) Trim panel | (7) Speaker grille | |
| (4) Pull handle | (8) Upper trim | |

GENERAL DESCRIPTION

Exterior/Interior Trim

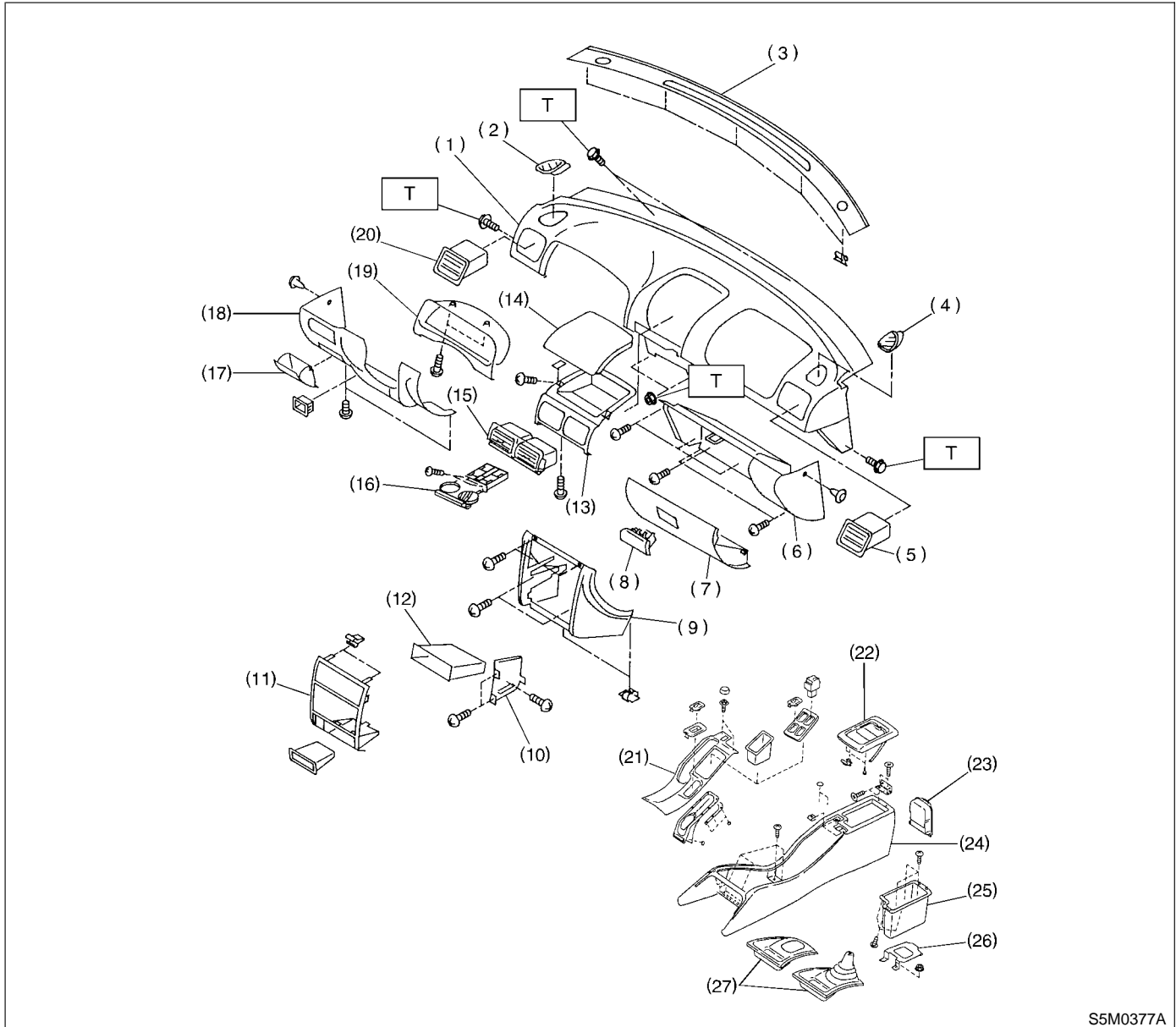
5. INNER TRIM S911001A0512



S5M0406A

- | | | |
|------------------------------|---------------------------------|----------------------------------|
| (1) Front pillar upper trim | (6) Rear quarter lower trim | (11) Center pillar lower trim |
| (2) Center pillar upper trim | (7) Rear skirt trim | (12) Side sill rear lower cover |
| (3) Rear pillar upper trim | (8) Front pillar lower trim | (13) Side sill front upper cover |
| (4) Cover | (9) Center pillar cover | (14) Side sill front lower cover |
| (5) Pocket | (10) Side sill rear upper cover | |

6. INSTRUMENT PANEL S911001A0508



S5M0377A

- | | | |
|-------------------------------------|------------------------|------------------------|
| (1) Pad & frame | (12) Pocket | (23) Rear cup holder |
| (2) Grille side (D) | (13) Panel center | (24) Console box |
| (3) Front def. grille | (14) Center pocket lid | (25) Console pocket |
| (4) Grille side (P) | (15) Grille center | (26) Rear console BRKT |
| (5) Grille vent (P) | (16) Cup holder | (27) Front cover |
| (6) Glove box panel | (17) Side pocket | |
| (7) Glove box lid | (18) Lower cover ASSY | |
| (8) Knob | (19) Meter visor | |
| (9) Instrument panel center console | (20) Grille vent (D) | |
| (10) BRKT (Radio) | (21) Console cover | |
| (11) Center console cover | (22) Console lid | |

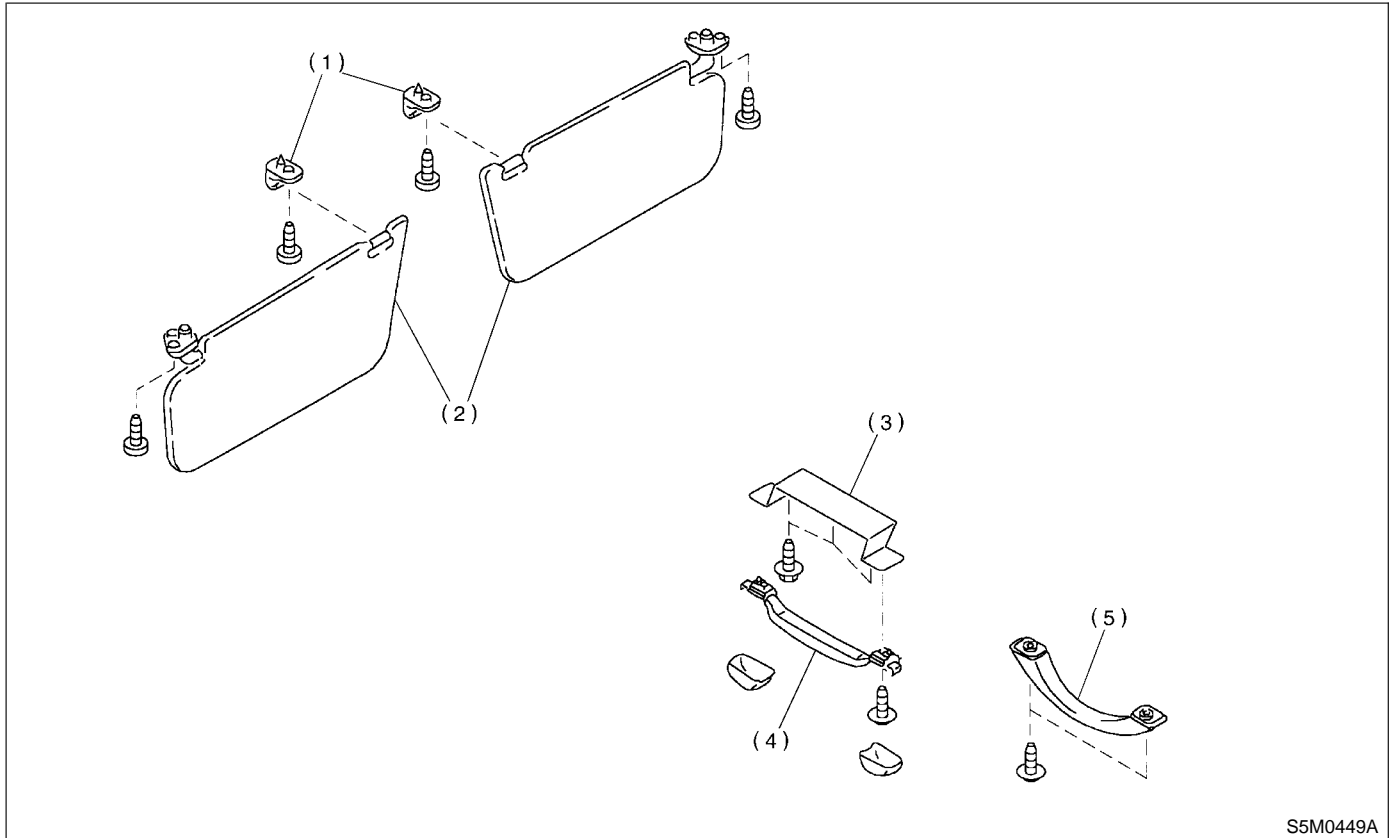
Tightening torque: N·m (kgf·m, ft·lb)

T: 7 (0.7, 5.1)

GENERAL DESCRIPTION

Exterior/Interior Trim

7. INNER ACCESSORIES S911001A0510



- (1) Hook
- (2) Sun visor

- (3) Assist rail bracket
- (4) Assist grip (retractable)

- (5) Assist grip (fixed)

GENERAL DESCRIPTION

Exterior/Interior Trim

B: PREPARATION TOOL S911001A17

TOOL NAME	REMARKS
Clip remover	Used for removal of trim.
Adhesive remover	Used for removal of side protector.
Primer	Used for installation of side protector.
Infrared lamp	Used for disassembly/assembly of side protector.
Tow-sided tape	Used for installation of side protector.

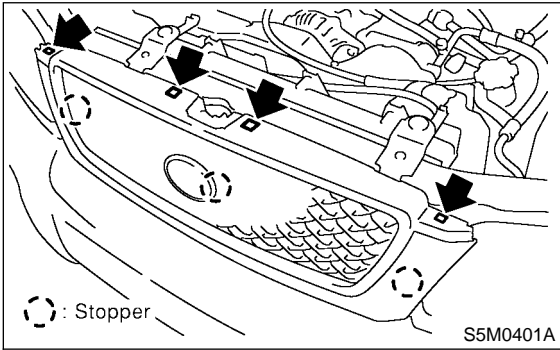
FRONT GRILLE

Exterior/Interior Trim

2. Front Grille S911379

A: REMOVAL S911379A18

- 1) Open hood.
- 2) Remove the four upper clips from the body panel. Push the part shown in the figure by using a screwdriver while lightly pulling the front grille.



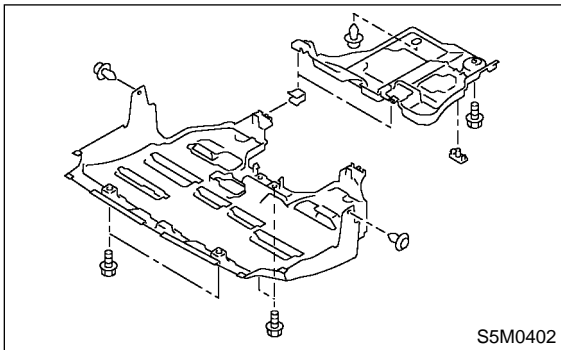
B: INSTALLATION S911379A11

- 1) Attach all clips to front grille.
- 2) Align them with clip holes in body and push them into place.

3. Front Under Cover S911372

A: REMOVAL S911372A18

- 1) Lift-up the vehicle.
- 2) Loosen bolts and clips to remove under cover.



B: INSTALLATION S911372A11

Install in the reverse order of removal.

FRONT BUMPER

Exterior/Interior Trim

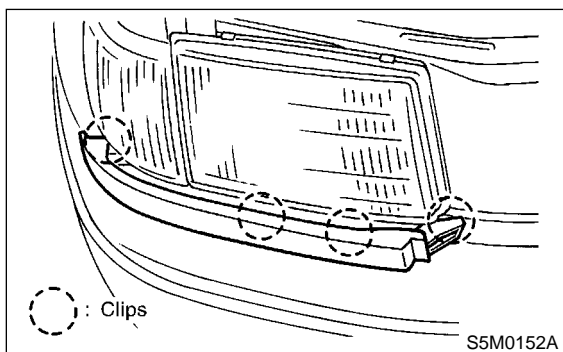
4. Front Bumper S911371

A: REMOVAL S911371A18

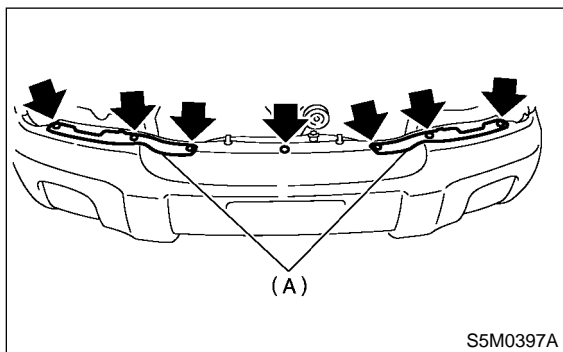
CAUTION:

- Handle bumper carefully to avoid damage to bumper face.
- Do not damage body during removal or installation of bumper.
- To avoid damage to bumper, lay removed bumper on sheet spread on the floor. Do not lay it directly on the floor.

- 1) Disconnect the ground cable from the battery.
- 2) Remove front fog light. <Ref. to LI-48, REMOVAL, Front Fog Light Assembly.>
- 3) Remove the front grille. <Ref. to EI-10, REMOVAL, Front Grille.>
- 4) Remove headlight washer nozzle. (Headlight washer equipped vehicle) <Ref. to WW-24, REMOVAL, Headlight Washer.>
- 5) Remove the extension of both sides.

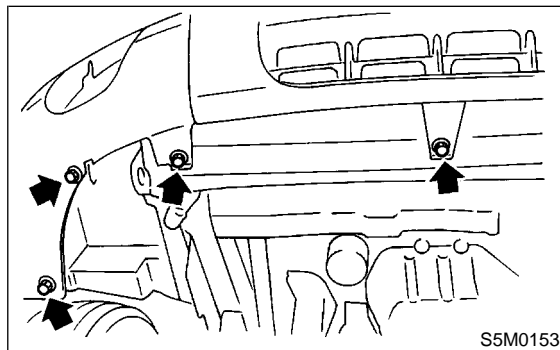


- 6) Remove the seven clips and then detach plate (A).

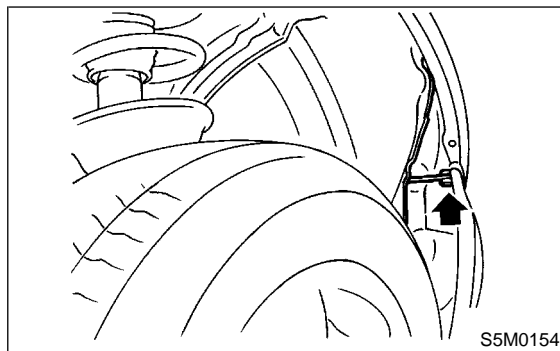


- 7) Remove under cover. <Ref. to EI-11, REMOVAL, Front Under Cover.>

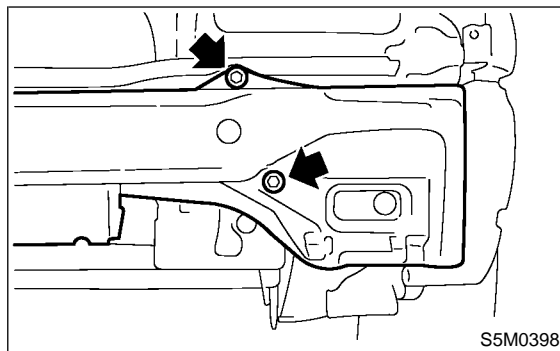
- 8) Remove the seven clips from under side of bumper.



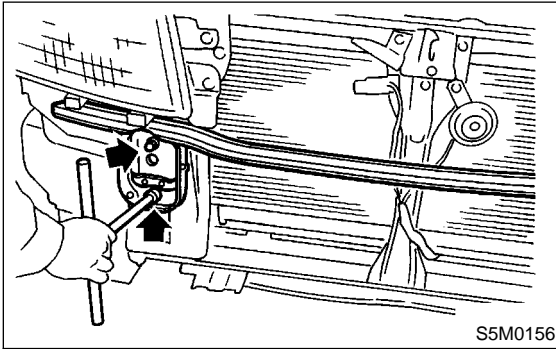
- 9) Turn over the front mud guard of the front portion and then remove bolt.



- 10) Remove bumper face and E/A foam.
- 11) Remove the four bolts and then detach the back beam.



12) Remove the four bolts and then detach the beam upper.



B: INSTALLATION S911371A11

Install in the reverse order of removal.

CAUTION:

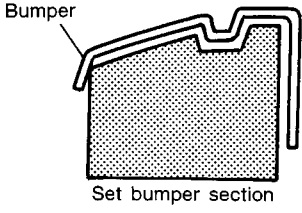
- Handle bumper carefully to avoid damage to bumper face.
- Do not damage body during removal or installation of bumper.

FRONT BUMPER

Exterior/Interior Trim

C: REPAIR S911371A19

1. COATING METHOD FOR PP BUMPER S911371A1901

Process No.	Process name	Job contents	
1	Bumper mounting	Set bumper on paint worktable if required. Use paint worktable conforming to inner shape of bumper when possible.	 <p style="text-align: center;">Bumper Set bumper section</p> <p style="text-align: right;"><small>G5M0164</small></p>
2	Masking	Mask specified part (black base) with masking tape. Use masking tape for PP (example, Nichiban No. 533, etc.).	
3	Degreasing, cleaning	Clean all parts to be painted with white gasoline, normal alcohol, etc. to remove dirt, oil, fat, etc.	
4	Primer paint	Apply primer one to all parts to be painted, using air gun. Use primer (clear).	
5	Drying	Dry at normal temperature [10 to 15 min. at 20°C (68°F)]. In half-dried condition, PP primer paint is dissolved by solvent, e.g. thinner, etc. Therefore, if dust or dirt must be removed, use ordinary alcohol, etc.	
6	Top coat paint (I)	Solid color	Metallic color
		Use section (block) paint for top coat. ● Paint in use (for each color): Solid paint Hardener PB Thinner T-301 ● Mixing ratio: Main agent vs. hardener = 4:1 ● Viscosity: 10 — 13 sec/20°C (68°F) ● Film thickness: 35 — 45μ ● Spraying pressure: 245 — 343 kPa (2.5 — 3.5 kg/cm ² , 36 — 50 psi)	Use section (block) paint for top coat. ● Paint in use (for each color): Metallic paint Hardener PB Thinner T-306 ● Mixing ratio: Main agent vs. hardener = 10:1 ● Viscosity: 10 — 13 sec/20°C (68°F) ● Film thickness: 15 — 20μ ● Spraying pressure: 245 — 343 kPa (2.5 — 3.5 kg/cm ² , 36 — 50 psi)
7	Drying	Not required.	Dry at normal temperature [10 min. or more at 20°C (68°F)]. In half-dried condition, avoid dust, dirt.
8	Top coat paint (II)	Not required.	Apply a clear coat to parts with top coat paint (I), three times, at 5 — 7 minutes intervals. ● Paint in use: Metallic paint Hardener PB Thinner T-301 ● Mixing ratio: Clear vs. hardener = 6:1 ● Viscosity: 14 — 16 sec/20°C (68°F) ● Film thickness: 25 — 30μ ● Spraying pressure: 245 — 343 kPa (2.5 — 3.5 kg/cm ² , 36 — 50 psi)
9	Drying	60°C (140°F), 60 min. or 80°C (176°F), 30 min. If higher than 80°C (176°F), PP may be deformed. Keep maximum temperature of 80°C (176°F).	
10	Inspection	Paint check.	
11	Masking removal	Remove masking in process No. 2.	

2. REPAIR INSTRUCTIONS FOR COLORED PP BUMPER S911371A1902

NOTE:

All PP bumpers are provided with a grained surface, and if the surface is damaged, it cannot normally be restored to its former condition. Damage limited to shallow scratches that cause only a change in the lustre of the base material or coating, can be almost fully restored. Before repairing a damaged area, explain this point to the customer and get an understanding about the matter. Repair methods are outlined below, based on a classification of the extent of damage.

● **Minor damage causing only a change in the lustre of the bumper due to a light touch**

Almost restorable.

Process No.	Process name	Job contents	
1	Cleaning	Clean the area to be repaired using water.	
2	Sanding	Grind the repairing area with #500 sand paper in a "feathering" motion.	
3	Finish	Resin section	Coated section
		Repeatedly apply wax to the affected area using a soft cloth (such as flannel). Recommended wax: NITTO KASEI Soft 99 TIRE WAX BLACK, or equivalent.	Perform either the same operation as for the resin section or process No. 18 and subsequent operations in the "(3)" section, depending on the degree and nature of damage.
		Polish the waxed area with a clean cloth after 5 to 10 minutes.	

● **Deep damage caused by scratching fences, etc.**

A dent cannot be repaired but a whitened or swelled part can be removed.

Process No.	Process name	Job contents	
1	Cleaning	Clean damaged area with water.	
2	Removal of damaged area	Cut off protruding area, if any, due to collision, using a putty knife.	
3	Sanding	Grind the affected area with #100 to #500 sand paper.	
4	Finish	Resin section	Coated section
		Same as Process No. 3 in the "(1)" section.	Perform Process No. 12 and subsequent operations in the "(3)" section.

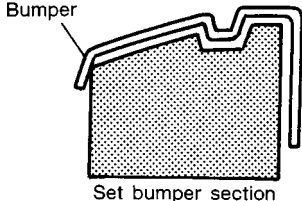
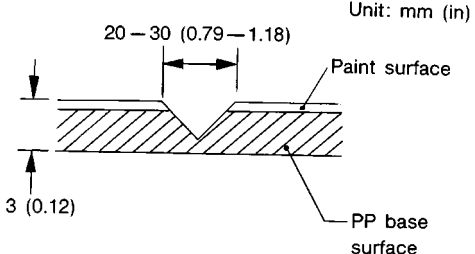
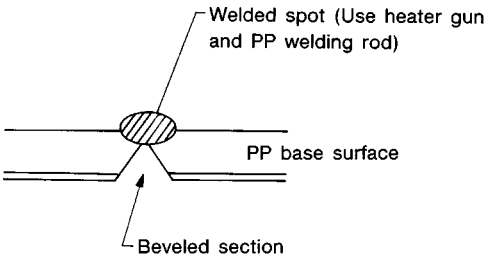
FRONT BUMPER

Exterior/Interior Trim

● Deep damage such as a break or hole that requires filling

Much of the peripheral grained surface must be sacrificed for repair, and the degree of restoration is not really worth the expense. (The surface, however, will become almost flush with adjacent areas.)

Recommended repair kit: PP Part Repair Kit (NRM)

Process No.	Process name	Job contents	
1	Bumper removal	Remove bumper as required.	
2	Part removal	Remove parts built into bumper as required.	
3	Bumper placement	Place bumper on a paint worktable as required. It is recommended that contour of worktable accommodate internal shape of bumper.	 <p style="text-align: center;">Bumper Set bumper section</p> <p style="text-align: right;">G5M0164</p>
4	Surface preparation	Remove dust, oil, etc. from areas to be repaired and surrounding areas, using a suitable solvent (NRM No. 900 Precleno, white gasoline, or alcohol).	
5	Cutting	If nature of damage are cracks or holes, cut a guide slit of 20 to 30 mm (0.79 to 1.18 in) in length along the crack or hole up to the bumper's base surface. Then, bevel or "vee-out" the affected area using a knife or grinder.	 <p style="text-align: right;">Unit: mm (in)</p> <p style="text-align: right;">G5M0165</p>
6	Sanding (I)	Grind beveled surface with sand paper (#40 to #60) to smooth finish.	
7	Cleaning	Clean the sanded surface with the same solvent as used in Process No. 4.	
8	Temporary welding	Grind the side just opposite the beveled area with sand paper (#40 to #60) and clean using a solvent. Temporarily spot-weld the side, using a PP welding rod and heater gun.	 <p style="text-align: right;">G5M0166</p>
		NOTE:	
		<ul style="list-style-type: none"> ● Do not melt welding rod until it flows out. This results in reduced strength. ● Leave the welded spot unattended until it cools completely. 	

FRONT BUMPER

Exterior/Interior Trim

Process No.	Process name	Job contents
9	Welding	Using a heater gun and PP welding rod, weld the beveled spot while melting the rod and damaged area.
		<div style="text-align: center;"> </div> <p style="text-align: right;">G5M0167</p> <p>NOTE:</p> <ul style="list-style-type: none"> ● Melt the sections indicated by hatched area. ● Do not melt welding rod until it flows out, in order to provide strength. ● Always keep the heater gun 1 to 2 cm (0.4 to 0.8 in) away from the welding spot. ● Leave the welded spot unattended until it cools completely.
10	Sanding (II)	Remove excess part of weld with a putty knife. If a drill or disc wheel is used instead of the knife, operate it at a rate lower than 1,500 rpm and grind the excess part little by little. A higher rpm will cause the PP substrate to melt from the heat.
		<div style="text-align: center;"> </div> <p style="text-align: right;">G5M0168</p> <p>Sand the welded spot smooth with #240 sand paper.</p>
11	Masking	Mask the black substrate section using masking tape. Recommended masking tape: Nichiban No. 533 or equivalent
12	Cleaning/ degreasing	Completely clean the entire coated area, using solvent similar to that used in Process No. 4.
13	Primer coating	Apply a coat of primer to the repaired surface and its surrounding areas. Mask these areas, if necessary. Recommended primer: Mp/ 364 PP Primer NOTE: Be sure to apply one coat of primer at a spraying pressure of 245 to 343 kPa (2.5 to 3.5 kg/cm ² , 36 to 50 psi) with a spray gun.
14	Leave unattended.	Leave the repaired area unattended at 20°C (68°F) for 10 to 15 minutes until primer is half-dry. NOTE: If dirt or dust comes in contact with the coated area, wipe it off with a cloth dampened with alcohol. (Do not use thinner since the coated area tends to melt.)
15	Primer surfacer coating	Apply a coat of primer surfacer to the repaired area two or three times at an interval of 3 to 5 minutes. Recommended surfacer: <ul style="list-style-type: none"> ● UPS 300 Flex Primer ● No. 303 UPS 300 Exclusive hardener ● NPS 725 Exclusive Reducer (thinner) ● Mixing ratio: 2 : 1 (UPS 300: No. 303) ● Viscosity: 12 — 14 sec/20°C (68°F) ● Coated film thickness: 40 — 50μ
16	Drying	Allow the coated surface to dry for 60 minutes at 20°C (68°F) [or 30 minutes at 60°C (140°F)].
17	Sanding (III)	Sand the coated surface and its surrounding areas using #400 sand paper and water.
18	Cleaning/ degreasing	Same as Process No. 12.

FRONT BUMPER

Exterior/Interior Trim

Process No.	Process name	Job contents	
		Solid color	Metallic color
19	Top coat (I)	Use a "block" coating method. ● Recommended paint: Suncryl (SC) No. 307 Flex Hardener SC Reducer (thinner) ● Mixing ratio: 3 : 1 Suncryl (SC) vs. No. 307 Flex Hardener ● Viscosity: 11 — 13 sec/20°C (68°F) ● Coated film thickness: 40 — 50μ ● Spraying thickness: 245 — 343 kPa (2.5 — 3.5 kg/cm ² , 36 — 50 psi)	Use a "block" coating method. ● Recommended paint: Suncryl (SC) No. 307 Flex Hardener SC Reducer (thinner) ● Mixing ratio: 3 : 1 Suncryl (SC) vs. No. 307 Flex Hardener ● Viscosity: 11 — 13 sec/20°C (68°F) ● Coated film thickness: 20 — 30μ ● Spraying thickness: 245 — 343 kPa (2.5 — 3.5 kg/cm ² , 36 — 50 psi)
20	Leave unattended.	Not required.	Leave unattended at 20°C (68°F) for at least 10 minutes until the topcoated area is half-dry. NOTE: Be careful to keep dust or dirt from coming in contact with the affected area.
21	Top coat (II)	Not required.	Apply a clear coat three times at an interval of 3 to 5 minutes. ● Recommended paint: SC710 Overlay Clear No. 307 Flex Hardener SC Reducer (thinner) ● Mixing ratio: 3 : 1 Suncryl (SC) vs. No. 307 Flex Hardener ● Viscosity: 10 — 13 sec/20°C (68°F) ● Coated film thickness: 20 — 30μ ● Spraying pressure: 245 — 343 kPa (2.5 — 3.5 kg/cm ² , 36 — 50 psi)
22	Drying	Allow the coated surface to dry at 20°C (68°F) for two hours or 60°C (140°F) for 30 minutes. NOTE: Do not allow the temperature to exceed 80°C (176°F) since this will deform the PP substrate.	
23	Inspection	Carefully check the condition of the repaired area.	
24	Masking removal	Remove masking tape applied in Process No. 11 and 13.	
25	Parts installation	Install parts on bumper in reverse order of removal.	
26	Bumper installation	Install bumper.	

5. Rear Bumper S911370

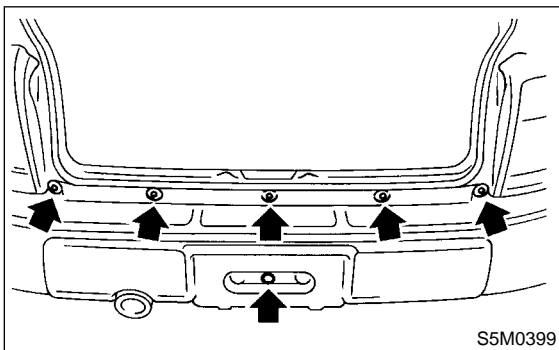
8) Remove rear bumper beam.

A: REMOVAL S911370A18

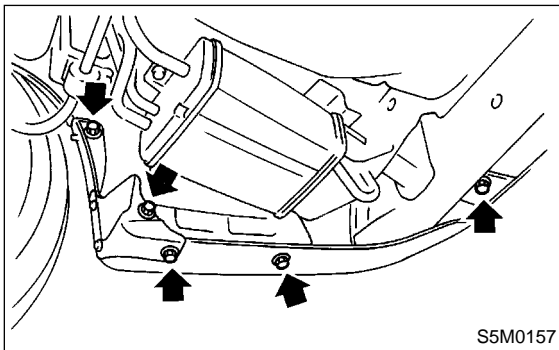
CAUTION:

- Handle bumper carefully to avoid damage to bumper face.
- Do not damage body during removal or installation of bumper.
- To avoid damage to bumper, lay removed bumper on sheet spread on the floor. Do not lay it directly on the floor.

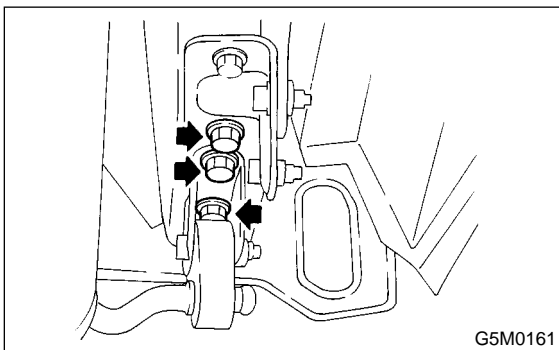
- 1) Disconnect the ground cable from the battery.
- 2) Open rear gate.
- 3) Remove the five screws and the clip from the rear bumper.



- 4) Disconnect license plate light and rear fog light (if equipped) connectors.
- 5) Remove bolts and clips from under side of bumper.



- 6) Remove bumper face.
- 7) Remove bolts from bumper stay.



REAR BUMPER

Exterior/Interior Trim

B: INSTALLATION S911370A11

CAUTION:

- Handle bumper carefully to avoid damage to bumper face.
- Do not damage body during removal or installation of bumper.

Install in the reverse order of removal.

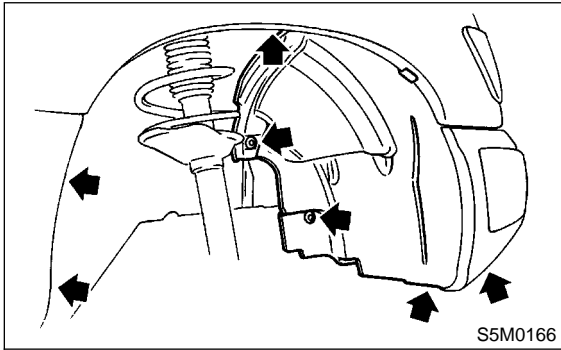
C: REPAIR S911370A19

Refer to front bumper repair. <Ref. to EI-12 REMOVAL, Front Bumper.>

6. Mud Guard S911374

A: REMOVAL S911374A18

- 1) Jack-up the vehicle.
- 2) Remove screws and clips. Move mud guard toward the center of the body and remove mud guard.



B: INSTALLATION S911374A11

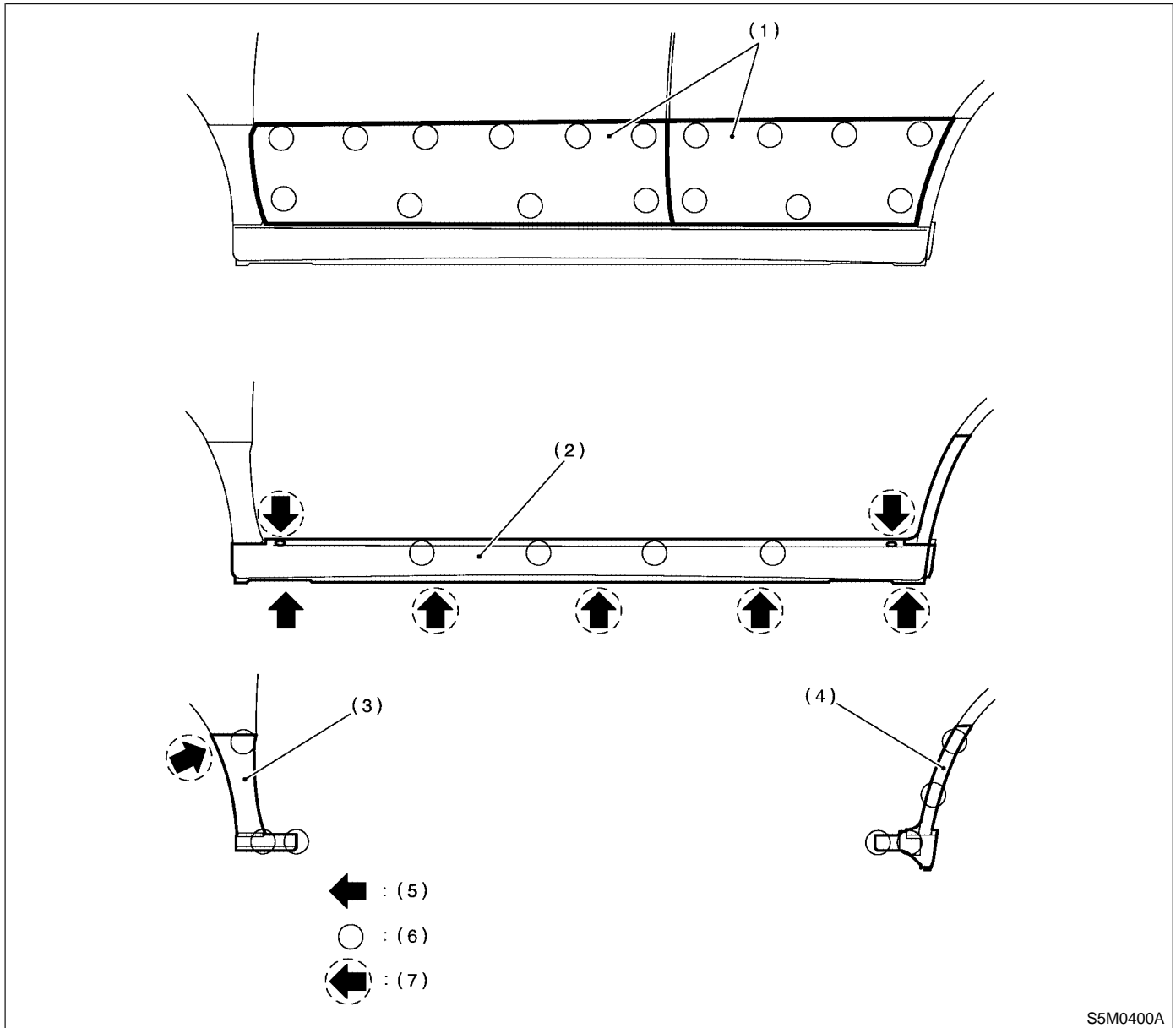
Insert hook into body, and tighten it with screw and clip.

PROTECTOR

Exterior/Interior Trim

7. Protector S911380

A: REMOVAL S911380A18



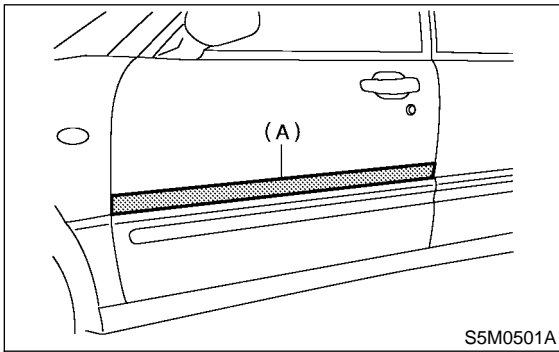
S5M0400A

- (1) Side protector (Door)
- (2) Side protector (Side sill)
- (3) Side protector (Front fender)

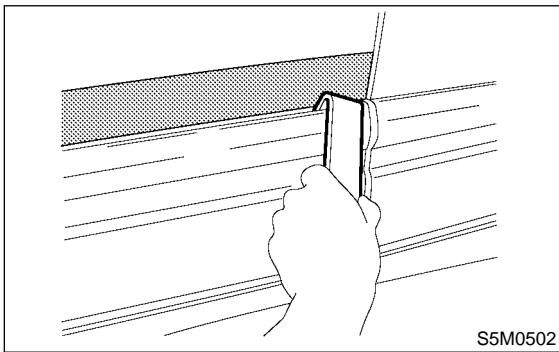
- (4) Side protector (Rear quarter)
- (5) Screw
- (6) Clip

- (7) Clip

1) Attach masking tape (A) on the upper painted area of the protector.



2) Release clip engagement using clip remover, and remove the protector while peeling off two-sided tape.



NOTE:

- To increase adhesive remover strength, leave two-sided tape on body and side protector.
- If two-sided tape is too thick, use a putty knife to cut it thin so that adhesive remover is ready for use.
- If two-sided tape is hard to remove, heat to approximately 40°C (104°F).

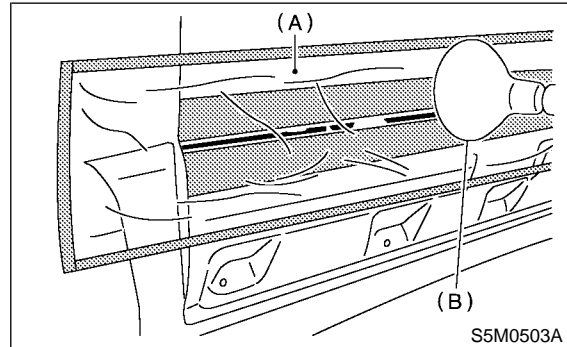
3) Apply an even coat of adhesive remover to the two-sided tape.

Recommended adhesive remover:
SUMITOMO 3M4000 or equivalent

CAUTION:
Do not apply adhesive remover to lacquer base coated body panels.

4) Attach plastic wrap (A) to adhesive remover coated areas and heat to 40 to 60°C (104 to 140°F) for 5 to 10 minutes using an infrared lamp (B).

CAUTION:
Do not overheat until plastic wrap is somewhat white.



- Using a plastic spatula, remove traces of two-sided tape from body panel.
- Remove masking tape and clean traces of two-sided tape using a cloth dampened with white gasoline.
- Similarly, clean traces of adhesive from two-sided tape on side protector.

CAUTION:
Make sure side protector is clean and free of adhesive remover. Clean if necessary.

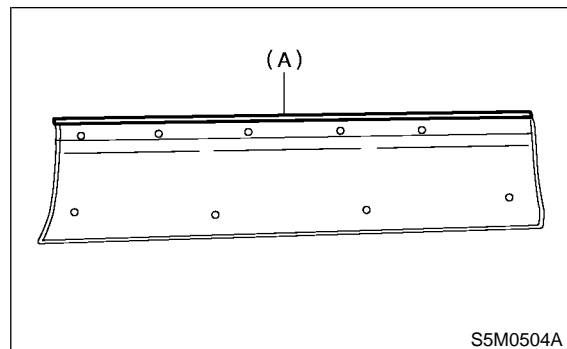
B: INSTALLATION S911380A11

1) Apply primer to original side protector (if used), and attach two-sided tape (A) to upper of side protectors as shown.

Two-sided tape:
Thickness; 1.2 mm (0.047 in)
Width; 5 mm (0.20 in)

Recommended primer:
SUMITOMO 3MK-500 or equivalent

Recommended two-sided tape:
SUMITOMO 3M5305 or equivalent



2) Using an infrared lamp, heat body panel to 40 to 60°C (104 to 140°F) and rear surface of side protector to 20 to 30°C (68 to 86°F).

PROTECTOR

Exterior/Interior Trim

3) Remove tack paper from two-sided paper. While aligning clips with holes in body panel, attach two-sided tape to side protector and body panel with a force of more than 49 N (5 kg, 11 lb) with roller. Do not allow air to enter mating surface of the two.

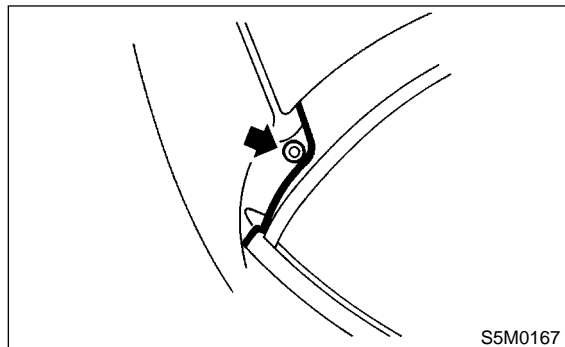
CAUTION:

- To maintain adhesive power, do not wash the vehicle for 24 hours after tape application.
- Push clip in securely using hands.
(To prevent deformation, do not use excessive force.)

8. Cowl Panel S911387

A: REMOVAL S911387A18

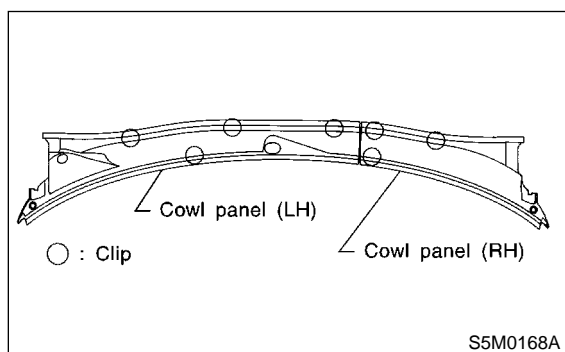
1) Remove cowl panel side.



2) Open hood.

3) Remove wiper arm. <Ref. to WW-14 REMOVAL, Wiper Arm.>

4) Lift cowl panel (RH), and then lift cowl panel (LH).



B: INSTALLATION S911387A11

Install in the reverse order of removal.

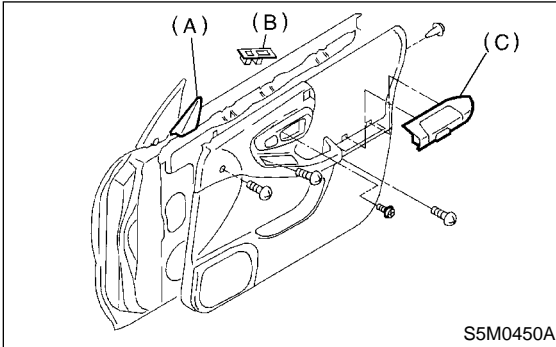
9. Front Door Trim S911356

A: REMOVAL S911356A18

CAUTION:

Do not apply excessive force to clip. Otherwise the clip may be broken.

- 1) Remove gusset cover (A), power window switch assembly (B) and pocket (C).
- 2) Remove screws, and then detach trim panel.



B: INSTALLATION S911356A11

Install in the reverse order of removal.

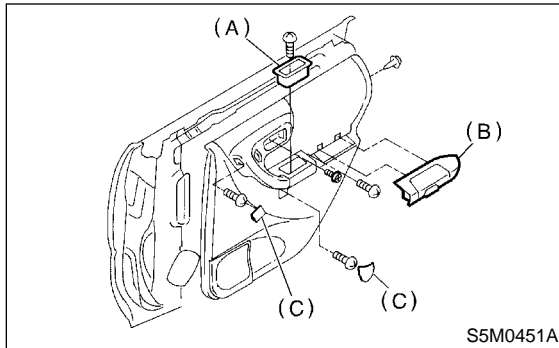
10. Rear Door Trim S911354

A: REMOVAL S911354A18

CAUTION:

Do not apply excessive force to clip. Otherwise the clip may be broken.

- 1) Remove handle (A), pocket (B) and clips (C).
- 2) Remove screws, and then detach trim panel.



B: INSTALLATION S911354A11

Install in the reverse order of removal.

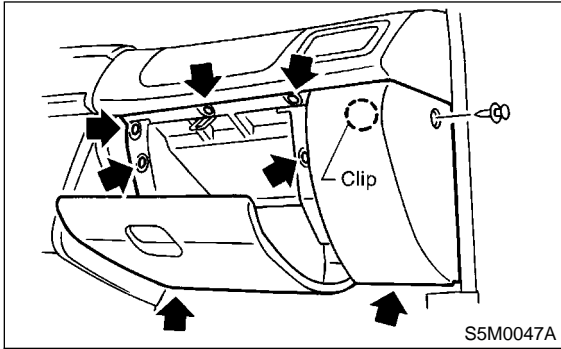
GLOVE BOX

Exterior/Interior Trim

11. Glove Box S911558

A: REMOVAL S911558A18

Loosen screws to remove glove box.



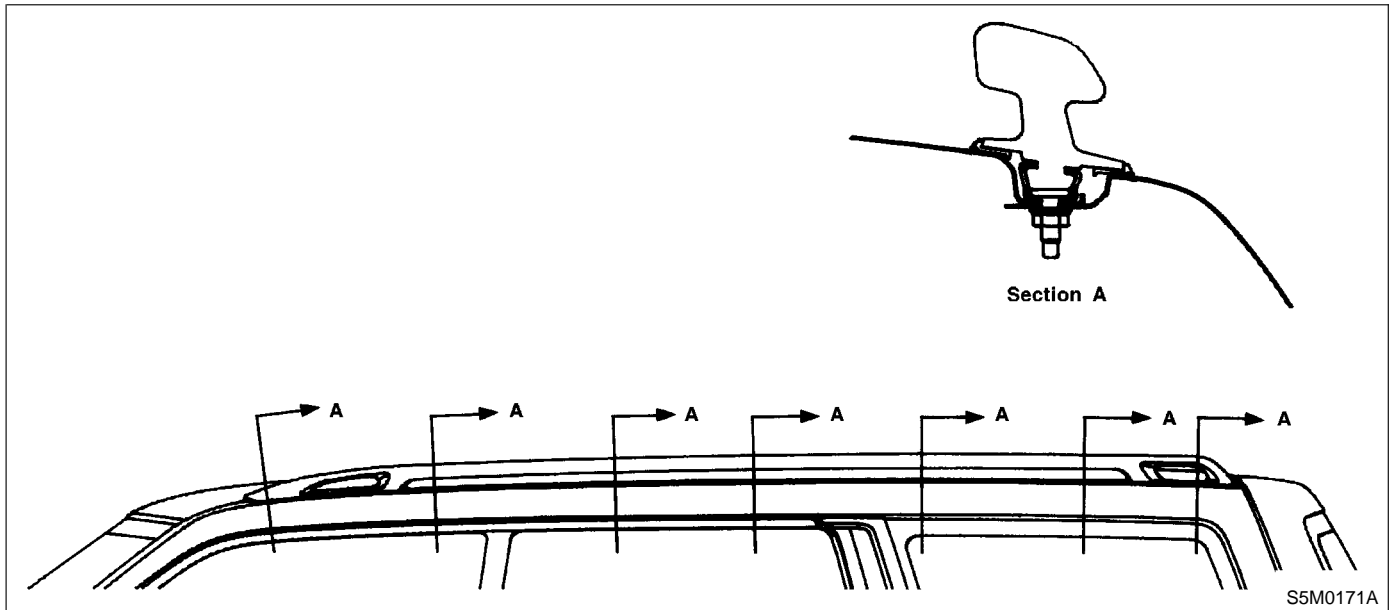
B: INSTALLATION S911558A11

Install in the reverse order of removal.

12. Roof Rail S911383

A: REMOVAL S911383A18

- 1) Remove roof trim. <Ref. to EI-41 REMOVAL, Roof Trim.>
- 2) Remove seven mounting nuts and then detach roof rail carefully.



B: INSTALLATION S911383A11

Install in the reverse order of removal.

CAUTION:

Be careful not to scratch body panels with roof rail stud bolts when removing and installing them.

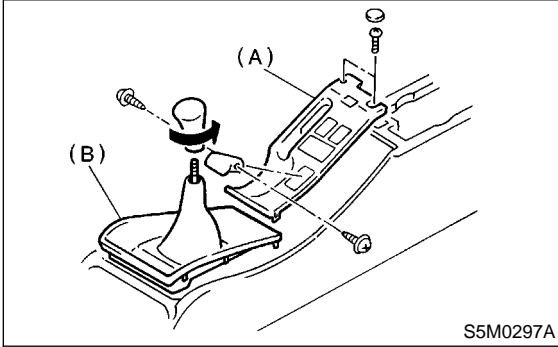
CONSOLE BOX

Exterior/Interior Trim

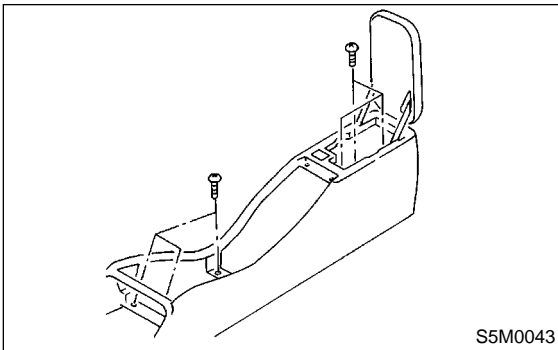
13. Console Box S911382

A: REMOVAL S911382A18

- 1) Remove shift knob and drive select lever (MT model).
- 2) Remove console cover (A) and front cover (B).



- 3) Remove console box.



B: INSTALLATION S911382A11

Install in the reverse order of removal.

14. Instrument Panel Assembly

S911381

A: REMOVAL S911381A18

Airbag system wiring harness is routed near combination meter.

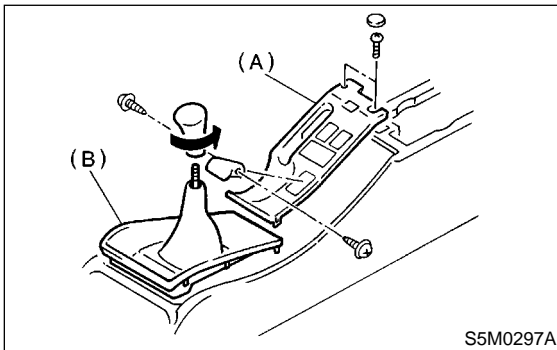
CAUTION:

- All airbag system wiring harness and connectors are colored yellow. Do not use electrical test equipment on these circuits.
- Be careful not to damage airbag system wiring harness when servicing the instrument panel.

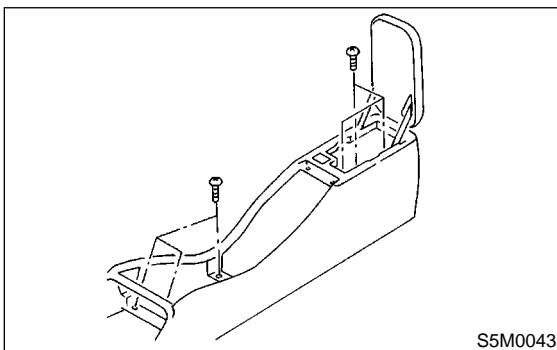
NOTE:

The following positions for removal and installation are for LHD models. The positions for RHD models are symmetrically opposite.

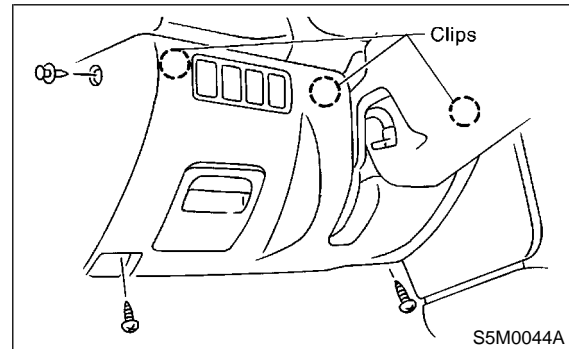
- 1) Disconnect GND cable from battery.
- 2) Remove shift knob and drive select lever. (MT model)
- 3) Remove console cover (A) and front cover (B).



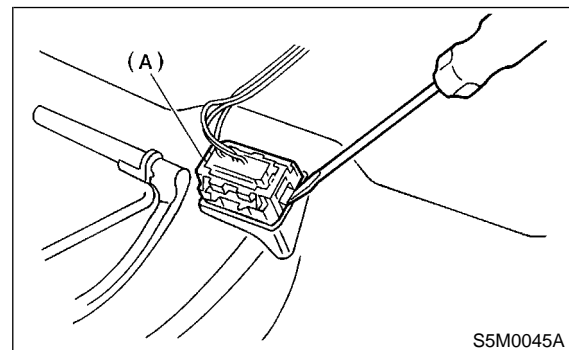
- 4) Remove console box.



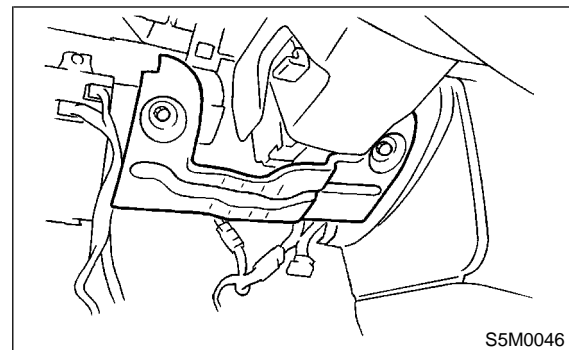
- 5) Remove lower cover and then disconnect connector.



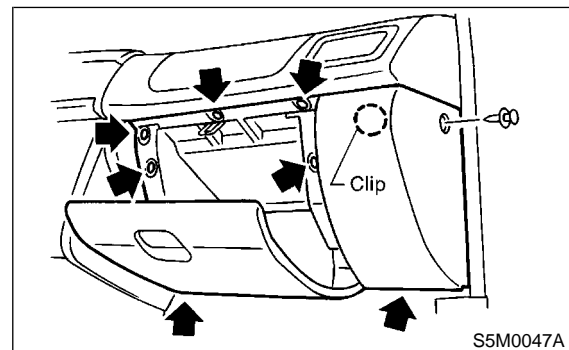
- 6) Disconnect data link connector (A) from lower cover.



- 7) Remove knee panel.



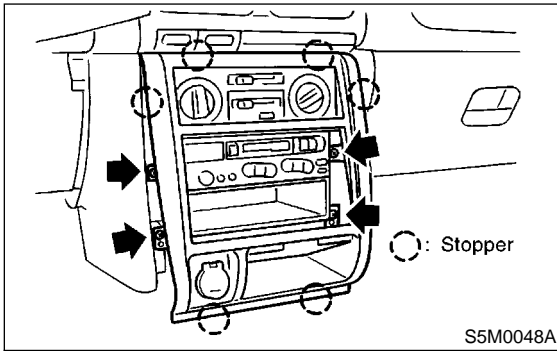
- 8) Remove glove box.



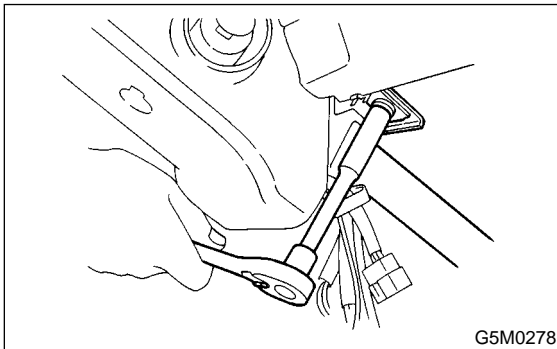
INSTRUMENT PANEL ASSEMBLY

Exterior/Interior Trim

- 9) Remove center panel and disconnect connector.
- 10) Remove audio.



- 11) Remove two bolts and lower steering column.

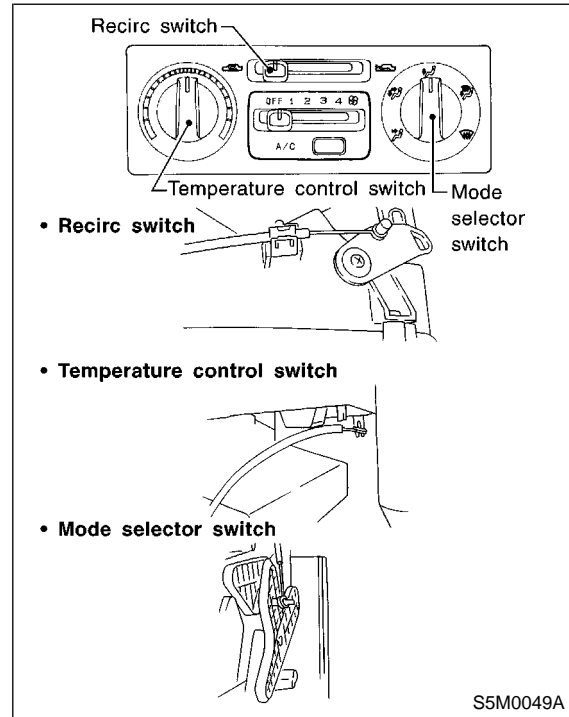


- 12) Set temperature control switch to "FULL HOT", mode selector switch to "DEF" position and recirc switch to "FRESH" position.

- 13) Disconnect temperature control cable and mode control cable from heater unit then disconnect recirc control cable from intake unit.

NOTE:

Do not move switch and link when installing.



INSTRUMENT PANEL ASSEMBLY

Exterior/Interior Trim

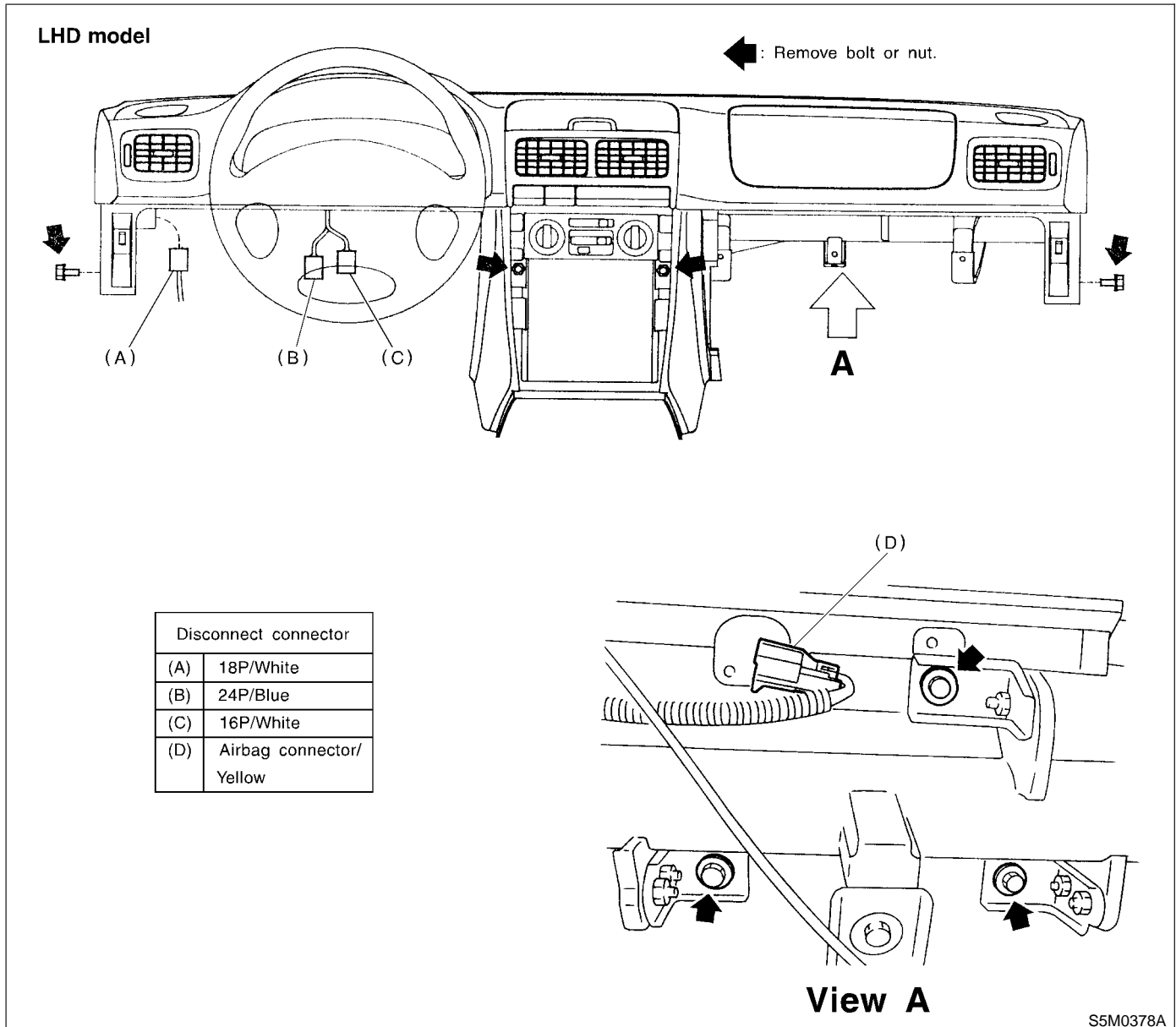
14) Disconnect harness connectors and then remove the installing bolts and nuts.

CAUTION:

Be sure to hold socket section and not harness when disconnecting.

NOTE:

Put matching mark, if necessary, for easy reassembly.

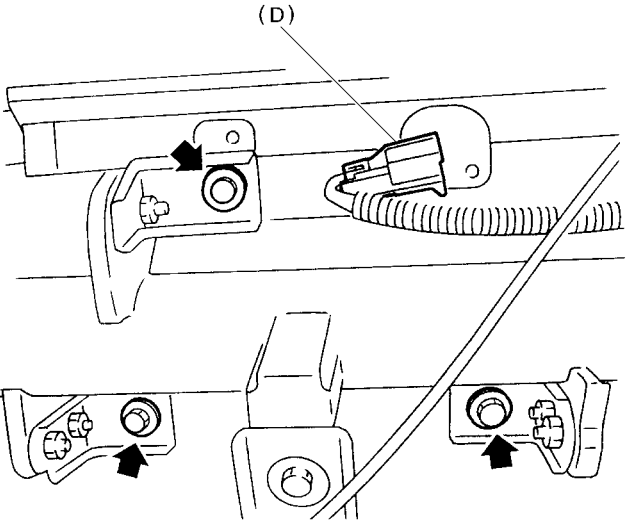
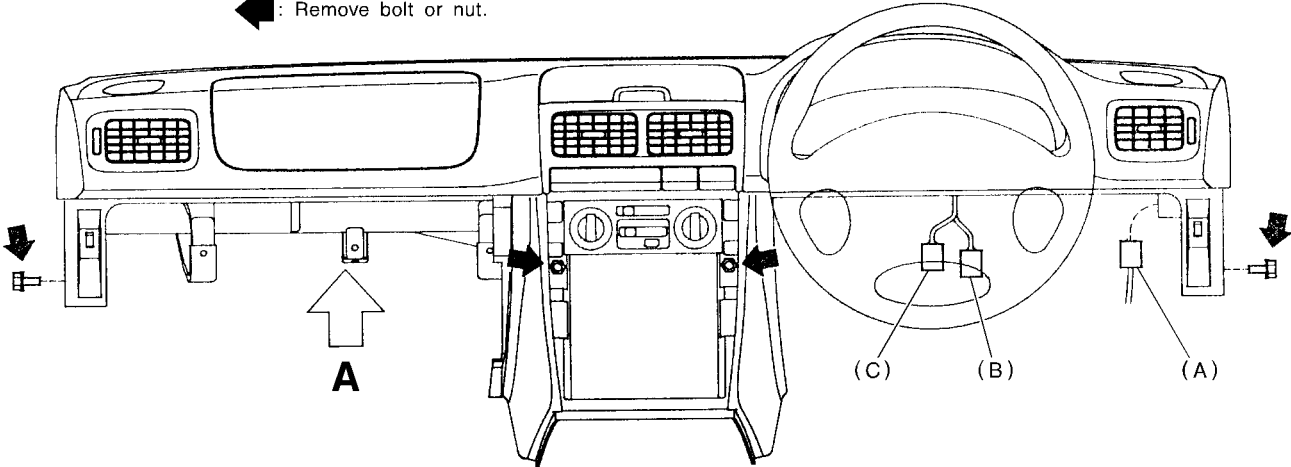


INSTRUMENT PANEL ASSEMBLY

Exterior/Interior Trim

RHD model

←: Remove bolt or nut.

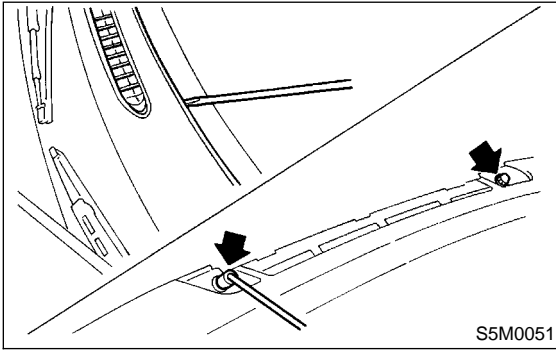


View A

Disconnect connector	
(A)	18P/White
(B)	32P/White
(C)	14P/Black
(D)	Airbag connector/ Yellow

S5M0379A

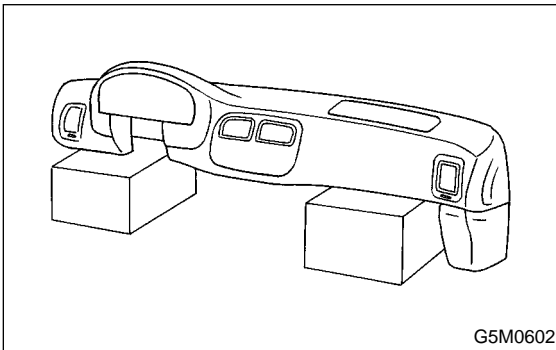
15) Remove front defroster grille and two bolts.



16) Remove instrument panel carefully from the body.

CAUTION:

- Do not pull the harness when disconnecting the connector.
- Take care not to scratch the instrument panel and related parts.
- When storing removed instrument panel with passenger airbag module, place it standing up on the floor.



INSTRUMENT PANEL ASSEMBLY

Exterior/Interior Trim

B: INSTALLATION S911381A11

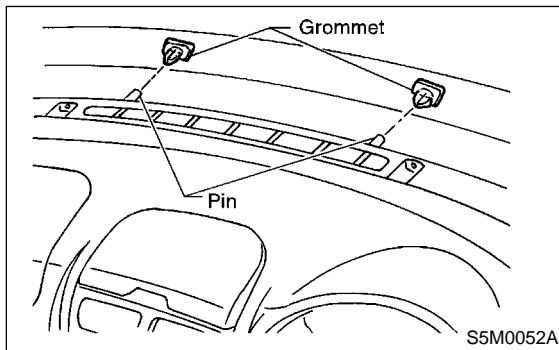
Install in the reverse order of removal.

CAUTION:

- Be careful not to snag the harness.
- Make sure to connect harness connector.
- Take care not to scratch the instrument panel and related parts.

NOTE:

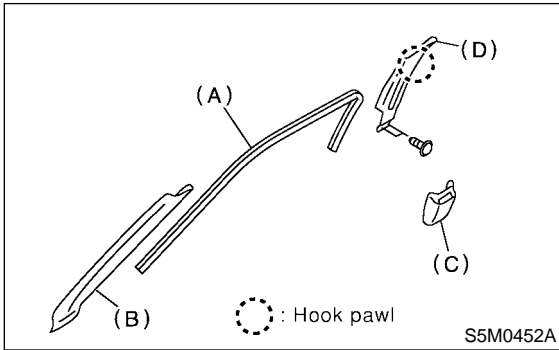
When setting the instrument panel into position, push the two pins into grommet on the body panel.



15. Upper Inner Trim S911384

A: REMOVAL S911384A18

- 1) Remove front mole (A).
- 2) Remove front pillar upper trim (B).
- 3) Remove center pillar cover (C).
- 4) Detach front seat belt shoulder anchor.
- 5) Loosen screws to remove center pillar upper trim (D).



B: INSTALLATION S911384A11

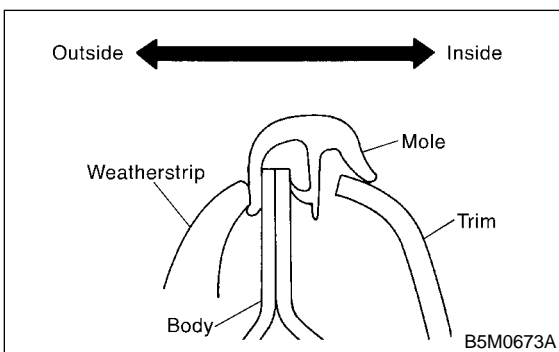
Install in the reverse order of removal.

CAUTION:

Be sure to securely hook pawls of inner trim panel to body flange.

NOTE:

When installing center pillar upper trim and front pillar upper trim, be sure to set front mole as shown in figure.



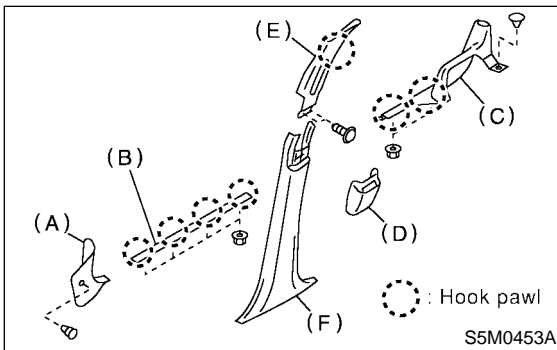
LOWER INNER TRIM

Exterior/Interior Trim

16. Lower Inner Trim S911369

A: REMOVAL S911369A18

- 1) Remove front pillar lower trim (A).
- 2) Remove side sill front upper cover (B).
- 3) Remove rear seat cushion <Ref. to SE-6 REMOVAL, Rear Seat.>, then remove side sill rear upper cover (C).
- 4) Remove center pillar cover (D).
- 5) Remove front seat belt shoulder anchor.
- 6) Loosen screws to remove center pillar upper trim (E).
- 7) Remove center pillar lower trim (F).



B: INSTALLATION S911369A11

Install in the reverse order of removal.

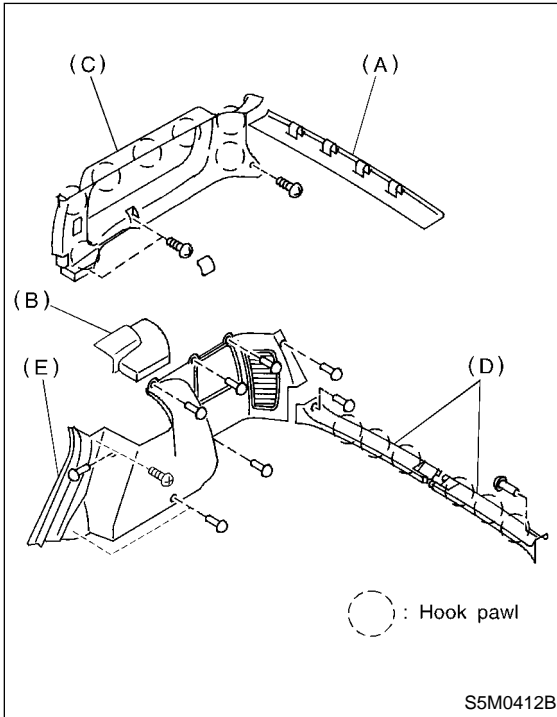
CAUTION:

Be sure to securely hook pawls of inner trim panel to body flange.

17. Rear Quarter Trim S911358

A: REMOVAL S911358A18

- 1) Remove rear rail trim (A).
- 2) Remove strut cover (B).
- 3) Remove rear seat belt anchor.
- 4) Remove caps and screws, and then remove rear quarter upper trim (C).
- 5) Remove rear skirt trim (D).
- 6) Remove luggage floor mat. <Ref. to EI-44, REMOVAL, Luggage Floor Mat.>
- 7) Remove rear quarter lower trim (E).



B: INSTALLATION S911358A11

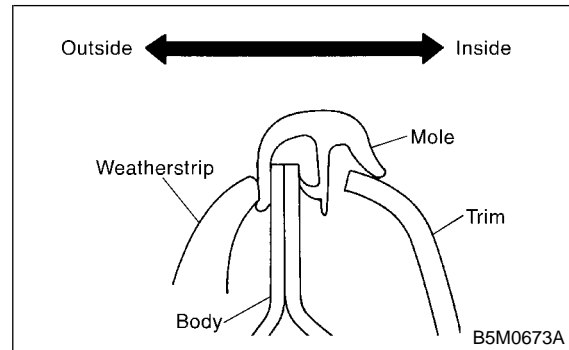
Install in the reverse order of removal.

CAUTION:

Be sure to securely hook pawls of inner trim panel to body flange.

NOTE:

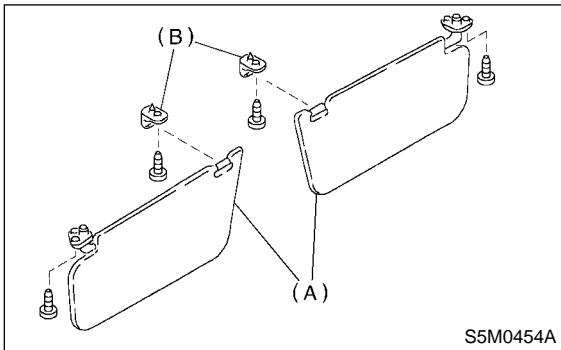
When installing rear quarter upper trim, be sure to set rear mole as shown in the figure.



18. Sun Visor S911359

A: REMOVAL S911359A18

Remove mounting screws then detach sun visor (A) and hook (B).



B: INSTALLATION S911359A11

Install in the reverse order of removal.

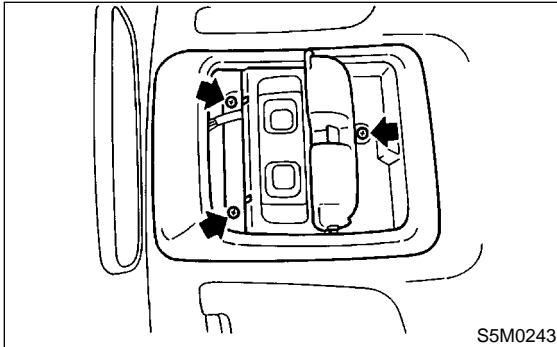
19. Roof Trim S911360

A: REMOVAL S911360A18

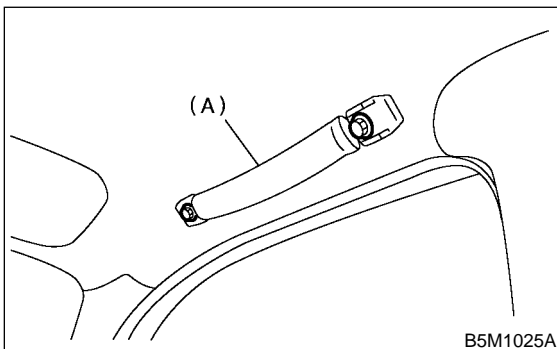
CAUTION:

When removing clip, use great care not to damage the roof trim.

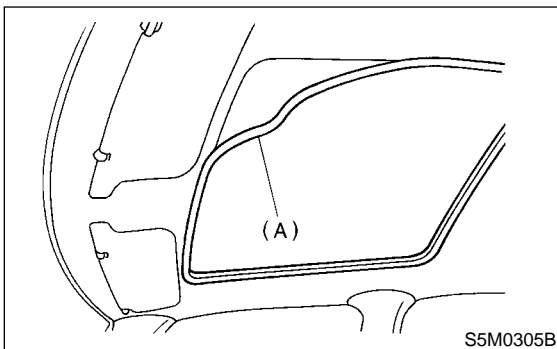
- 1) Disconnect ground cable from battery.
- 2) Remove head console.



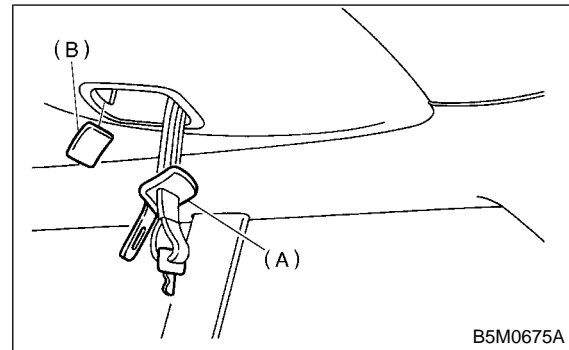
- 3) Remove sun visor and hook of both sides. <Ref. to EI-40, REMOVAL, Sun Visor.>
- 4) Remove assist grips (A).



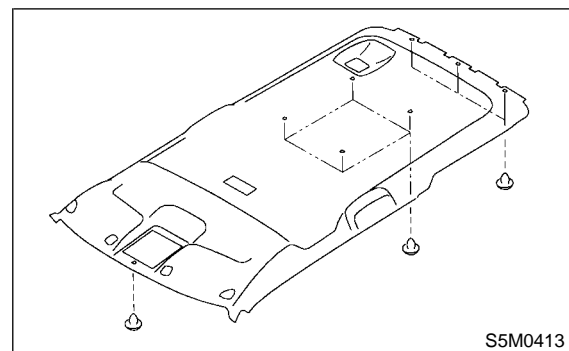
- 5) Remove upper inner trim. <Ref. to EI-37, REMOVAL, Upper Inner Trim.>
- 6) Remove rear quarter trim. <Ref. to EI-39, REMOVAL, Rear quarter Trim.>
- 7) Detach sunroof garnish (A). (Sunroof equipped model)



- 8) Remove cover (B) while detaching snap lock carefully. Put the rear seat belt tongue (A) out to the other side of the trim through the hole.



- 9) Remove clips and then remove roof trim.



B: INSTALLATION S911360A11

Install in the reverse order of removal.

REAR GATE TRIM

Exterior/Interior Trim

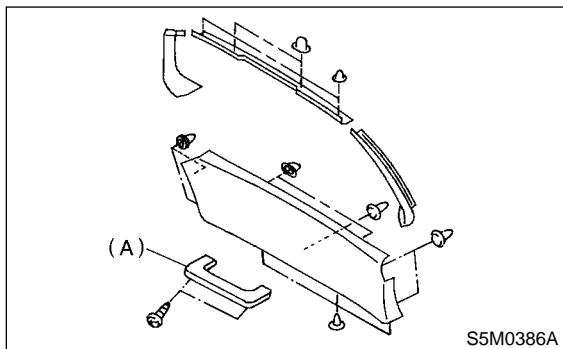
20. Rear Gate Trim S911357

A: REMOVAL S911357A18

CAUTION:

Be careful not to damage clips or their holes.

Remove rear gate inner handle (A) from rear gate and then detach trim panel.



B: INSTALLATION S911357A11

Install in the reverse order of removal.

21. Floor Mat S911362

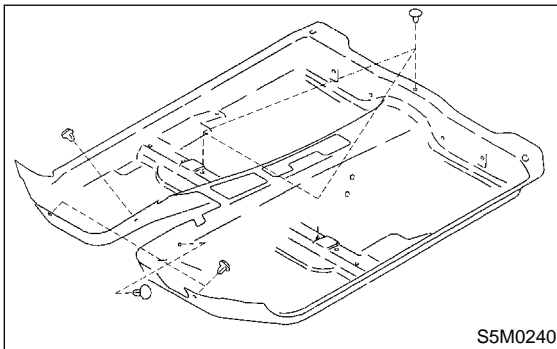
A: REMOVAL S911362A18

- 1) Remove front seats. <Ref. to SE-5 REMOVAL, Front Seat.>
- 2) Remove rear seat cushion. <Ref. to SE-6 REMOVAL, Rear Seat.>
- 3) Remove console box. <Ref. to EI-30 Console Box.>
- 4) Remove front pillar lower trim, side sill rear upper cover and center pillar lower trim. <Ref. to EI-38 REMOVAL, Lower Inner Trim.>
- 5) Remove clips from floor mat.

NOTE:

When pulling out edge, do not pull mat alone; pull mat together with edge. Ply off two steel clips on side sill front cover and one on side sill rear cover using screwdriver.

- 6) Remove mat hook.
- 7) Remove mat from toe board area.
- 8) Remove mat from rear heater duct.
- 9) Roll mat, and then take it out of opened rear door.



B: INSTALLATION S911362A11

Install in the reverse order of removal.

NOTE:

- Secure mat firmly with hook and Velcro tape.
- Insert mat edge firmly into the groove of side sill cover.

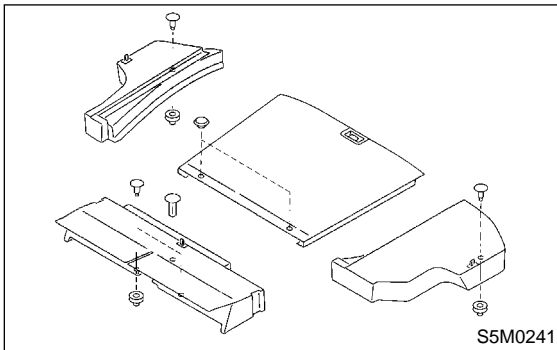
LUGGAGE FLOOR MAT

Exterior/Interior Trim

22. Luggage Floor Mat S911353

A: REMOVAL S911353A18

Remove clips, then detach rear floor mats and boxes.



B: INSTALLATION S911353A11

Install in the reverse order of removal.